



Characteristics



- Self-supporting casing construction made of galvanized steel plate, finished in structural epoxy-polyester painting white colour RAL9016 as standard. Other colours or stainless steel are available on request.
- Micro-perforated inlet grille with filter functions and easy service. It does not need prefilter.
- Anodized aluminium outlet vanes, airfoil shaped, adjustable from 0 to 15° each side.
- Double-inlet centrifugal fans driven by an external rotor motor and low noise level. 5-speed selector. "EC" models with very low consumption efficient fans.
- "P" type with water heated coil. "E" type with electrical shielded elements, three stages with integrated regulation. "A" type without heating, air only.
- Includes Plug&Play control with 7m RJ45 cable and infrared remote control. Optional: Clever control (programmable, automatic, intelligent, energy saving, Modbus RTU for BMS...).

Specifications

AIR ONLY

Model	Airflow m³/h	Power Fans 240V-60Hz kW	Current Fans 240V-60Hz A	Noise Level (5 m) dB(A)	Weight kg
M 1000 A 60Hz	1940	0,248	1,10	55	31
M 1500 A 60Hz	2910	0,372	1,65	56	46
M 2000 A 60Hz	3880	0,496	2,20	57	58
M 2500 A 60Hz	4850	0,620	2,75	58	72
M 3000 A 60Hz	5820	0,744	3,30	59	86
ECM 1000 A 60Hz	1840	0,142	1,24	56	31
ECM 1500 A 60Hz	2760	0,213	1,86	57	46
ECM 2000 A 60Hz	3680	0,284	2,48	58	58
ECM 2500 A 60Hz	4600	0,355	3,10	59	72
ECM 3000 A 60Hz	5520	0,426	3,72	60	86
G 1000 A 60Hz	2400	0,372	1,65	57	43
G 1500 A 60Hz	3200	0,496	2,20	58	51
G 2000 A 60Hz	4800	0,744	3,30	59	80
G 2500 A 60Hz	5400	0,868	3,85	60	84
G 3000 A 60Hz	6200	0,992	4,40	61	95
ECG 1000 A 60Hz	2700	0,213	1,86	61	43
ECG 1500 A 60Hz	3600	0,284	2,48	62	51
ECG 2000 A 60Hz	5400	0,426	3,72	63	80
ECG 2500 A 60Hz	6300	0,497	4,34	64	84
ECG 3000 A 60Hz	7200	0,568	5,96	65	95

ELECTRICAL HEATED

Model	Airflow m³/h	Electrical Heating Capacity 460Vx3-60Hz kW	Power Fans 240V-60Hz kW	Current Fans 240V-60Hz A	Noise Level (5 m) dB(A)	Weight kg
M 1000 E 60Hz	1940	4/4/8	0,248	1,10	55	37
M 1500 E 60Hz	2910	5,3/5,3/10,6	0,372	1,65	56	57
M 2000 E 60Hz	3880	8/8/16	0,496	2,20	57	75
M 2500 E 60Hz	4850	8/8/16	0,620	2,75	58	94
M 3000 E 60Hz	5820	10,6/10,6/21,2	0,744	3,30	59	112
ECM 1000 E 60Hz	1840	4/4/8	0,142	1,24	56	37
ECM 1500 E 60Hz	2760	5,3/5,3/10,6	0,213	1,86	57	57
ECM 2000 E 60Hz	3680	8/8/16	0,284	2,48	58	75
ECM 2500 E 60Hz	4600	8/8/16	0,355	3,10	59	94
ECM 3000 E 60Hz	5520	10,6/10,6/21,2	0,426	3,72	60	112
G 1000 E 60Hz	2400	4/8/12	0,372	1,65	57	52
G 1500 E 60Hz	3200	5,3/10,6/16	0,496	2,20	58	63
G 2000 E 60Hz	4800	8/16/24	0,744	3,30	59	100
G 2500 E 60Hz	5400	8/16/24	0,868	3,85	60	106
G 3000 E 60Hz	6200	10,6/21,2/32	0,992	4,40	61	120
ECG 1000 E 60Hz	2700	4/8/12	0,213	1,86	61	52
ECG 1500 E 60Hz	3600	5,3/10,6/16	0,284	2,48	62	63
ECG 2000 E 60Hz	5400	8/16/24	0,426	3,72	63	100
ECG 2500 E 60Hz	6300	8/16/24	0,497	4,34	64	106
ECG 3000 E 60Hz	7200	10,6/21,2/32	0,568	5,96	65	120

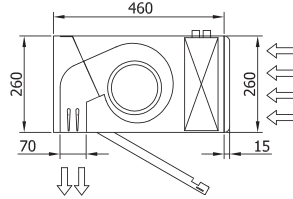
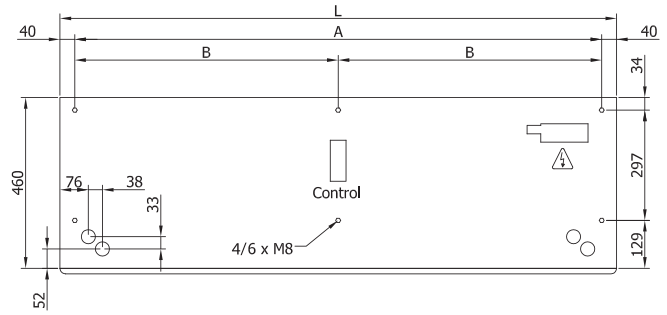
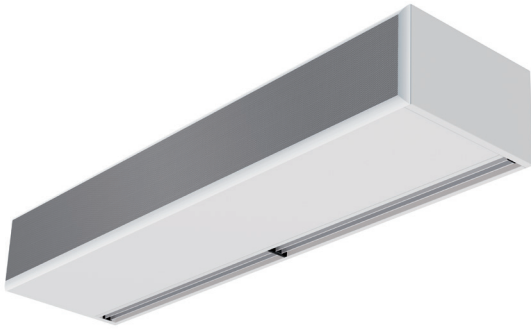
WATER HEATED

Model	Airflow m³/h	P86		P64		P54		Power Fans 240V-60Hz kW	Current Fans 240V-60Hz A	Noise Level (5 m) dB(A)	Weight kg
		Heating Capacity 80/60°C kW	Water Drop Pressure 80/60°C Pa	Heating Capacity 60/40°C kW	Water Drop Pressure 60/40°C Pa	Heating Capacity 50/40°C kW	Water Drop Pressure 50/40°C Pa				
M 1000 P 60Hz	1800	9,64	970	8,60	4810	8,60	1360	0,248	1,10	56	35
M 1500 P 60Hz	2700	15,01	830	13,76	7100	14,48	4970	0,372	1,65	57	53
M 2000 P 60Hz	3600	21,73	2110	18,36	5270	18,84	2290	0,496	2,20	58	69
M 2500 P 60Hz	4500	28,33	4170	22,91	4230	24,56	4480	0,620	2,75	59	86
M 3000 P 60Hz	5400	34,98	7220	28,52	7440	30,07	6280	0,744	3,30	60	103
ECM 1000 P 60Hz	1720	9,38	920	8,77	4560	8,74	1280	0,142	1,24	56	35
ECM 1500 P 60Hz	2580	14,58	790	14,02	6730	14,71	4690	0,213	1,86	57	53
ECM 2000 P 60Hz	3440	21,12	2010	18,70	4990	19,13	2150	0,284	2,48	58	69
ECM 2500 P 60Hz	4300	27,53	3960	23,33	4010	24,95	4230	0,355	3,10	59	86
ECM 3000 P 60Hz	5160	33,99	6860	29,05	7050	30,54	5920	0,426	3,72	60	103
G 1000 P 60Hz	2250	11,04	1230	9,92	6190	10,06	1800	0,372	1,65	57	50
G 1500 P 60Hz	3000	16,02	940	14,74	8020	15,60	5680	0,496	2,20	58	59
G 2000 P 60Hz	4500	24,92	2700	21,23	6820	22,06	3030	0,744	3,30	59	92
G 2500 P 60Hz	5250	31,17	4940	25,35	5070	27,40	5450	0,868	3,85	60	96
G 3000 P 60Hz	6000	37,36	8110	30,57	8420	32,42	7180	0,992	4,40	61	109
ECG 1000 P 60Hz	2550	11,89	1400	11,27	7110	11,50	2090	0,213	1,86	61	50
ECG 1500 P 60Hz	3400	17,29	1070	16,77	9240	17,86	6620	0,284	2,48	62	59
ECG 2000 P 60Hz	5100	26,86	3080	24,14	7850	25,24	3530	0,426	3,72	63	92
ECG 2500 P 60Hz	5950	33,63	5650	28,84	5840	31,38	6360	0,497	4,34	64	96
ECG 3000 P 60Hz	6800	40,34	9290	34,81	9710	37,16	8400	0,568	5,96	65	109

Water heated: connection pipes P86 and P64 are 2x3/4" female (male if lateral pipes), P54 2x1" male. P86 2 rows coil, P64 3 rows coil, P54 4 rows coil.

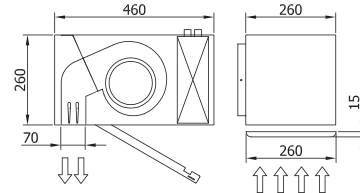
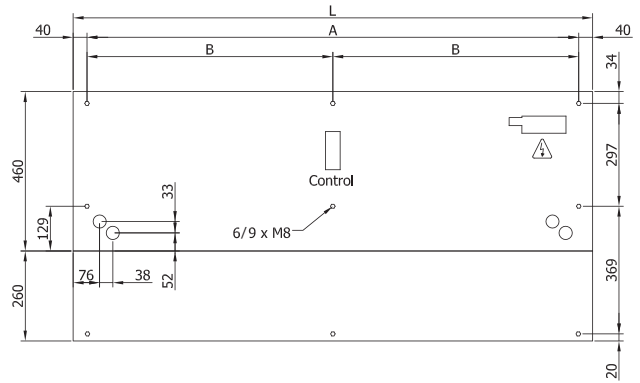


Layouts and dimensions



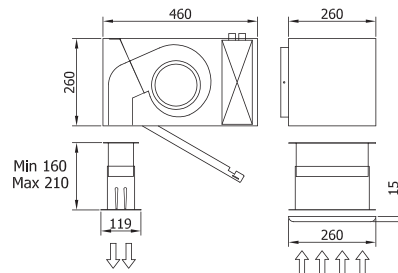
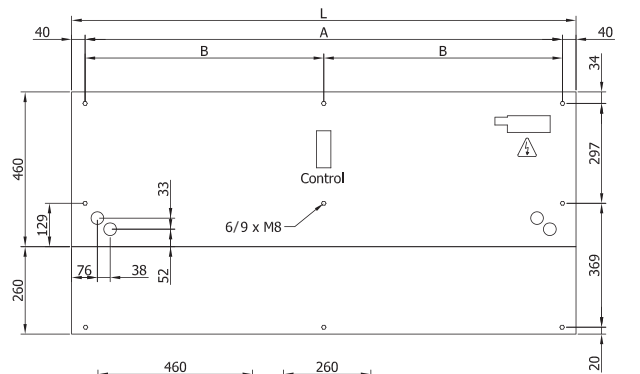
L	A	B
1000	920	-
1500	1420	710
2000	1920	960
2500	2420	1210
3000	2920	1460

Free hanging mounting



L	A	B
1000	920	-
1500	1420	710
2000	1920	960
2500	2420	1210
3000	2920	1460

Inside ceiling surface mounting



L	A	B
1000	920	-
1500	1420	710
2000	1920	960
2500	2420	1210
3000	2920	1460

False ceiling invisible mounting